

- Deep under-stairs coat/storage closet with light

Exterior

- Attached one-car garage with FrenchPorte overhead door, remote opener and number lock
- Additional off-street parking
- Terraced garden off the main floor, with mature plantings, two flagstone patios.
- Garden redesign by Sally Boasberg, a former Chairman of the American Horticultural Society .

Facts & Figures

- Wood, brick and glass construction
- Central air conditioning
- All second floor windows, except for static/picture windows, replaced in 2017 (Marvin)
- 2 wood-burning fireplaces (have not been used as such by current owners)
- Built in 1969
- Approximately 3,000 finished square feet
- Lot size: 7,148 square feet
- Taxes: \$7,849 (in 2016)
- Timberwood homeowners association fee: \$180 per quarter
- Snow and leaf removal, maintenance of private road and pond taken care of by HOA

Offered at \$1,295,000

Information deemed reliable but not guaranteed.



catarinabanner

202.487.7177

CBanner@eversco.com

DCHouseCat.com

marciesandalow

301.758.4894

Marcie@BCCDCREalestate.com

DCHouseSmarts.com



5345 MacArthur Blvd. NW

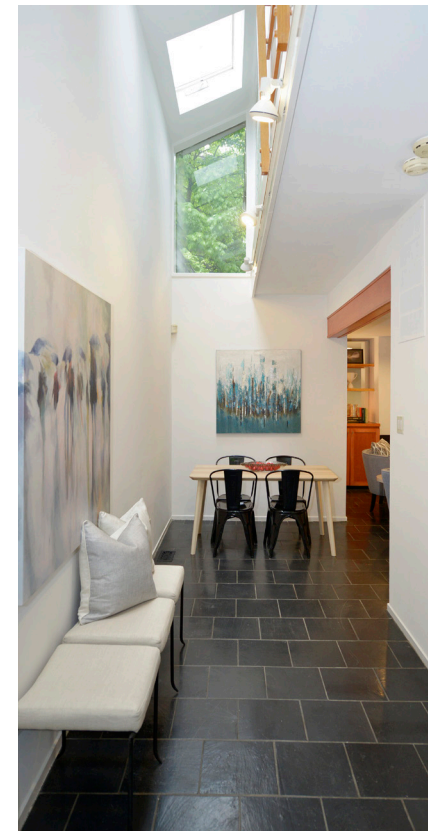
Washington DC 20016



Modern and Secluded in the Midst of the City

Welcome to this stunning mid-century modern oasis in the Kent/Palisades neighborhood. A short walk away from restaurants, stores and services or a five minute drive to Georgetown, the updated and meticulously maintained 4-bedroom, 3.5 bath home sits nestled into a hill of unexpected green, far off the main Boulevard. It is part of an enclave of 11 contemporary homes around a private lane and creek that was designed by leading 1960s modernist firm Cross & Adreon. Decks, patios and a beautifully designed garden are accessible from all levels, bringing the lush green exterior into the living spaces. Principal Eason Cross was a student of Walter Gropius at Harvard and in the early years of his career a designer for Goodman's Hollin Hills. Together with partner Henry Adreon, the firm conceived award-winning developments in the DC suburbs, but the secluded Timberwood cluster was their most urban challenge.

Also within easy walking distance are the highly rated Key School, Palisades Playground and Rec Center, the Capital Crescent Trail and the C & O Canal. Near Canal Road and Chain Bridge, the location also offers easy commuting to downtown DC, the Beltway, or the area airports.



EVERS & Co.

REAL ESTATE INC.

4400 Jenifer Street, NW
Washington, DC 20015
202.364.1700



Main Floor

- Flagstone steps to dramatic entry to two-story foyer with floor-to-ceiling windows
- Large main floor hall with skylights and ceiling-height west and south-east facing gable windows, opening to family room
- Powder room
- Family room with recessed lighting, slate fireplace, built-in speakers and cabinets, open to kitchen
- Renovated kitchen with center island with cooktop, maple cabinets, granite countertops and large sliding doors
- Spacious dining room with treetop views and reflections of green
- Open living room with exposures to south and west, wall of windows, built-in shelving, recessed lighting and wrap-around deck/balcony
- Access to main level deck and private terraced gardens from all first-floor rooms
- Original slate flooring throughout hall, powder room and kitchen/family room
- Refinished hardwood floors in living/dining room and on stairs
- Open stairs to skylit upper level landing with exposed beam



Upper Level

- Bright open hall with linen closet
- Master bedroom in back of home with fireplace, sitting area and access to private patio. Two exposures, multiple ceiling-height windows, two closets, vaulted ceiling, skylight, track lighting
- Master bathroom with dual vanity, marble shower and bidet
- Second large bedroom with en-suite bath (#2), two exposures with tree-top views and its own balcony; two double-door closets
- Bath #2 (also accessible from hall) with skylight and separate toilet/shower room, marble flooring, vanity and stall
- Third bedroom, overlooking the terraced garden



Lower Level

- Ground level bedroom #4 with large closet and wide window
- Full bath (#3) with tub and cheerful Mexican tile
- Home office or recreation room with large window, built-in desk, wall of bookshelves and separate exit to street via the garage
- Laundry room with lots of extra storage (continued)