

# SEVEN OR SIX ROOMS, BATH AND PORCH



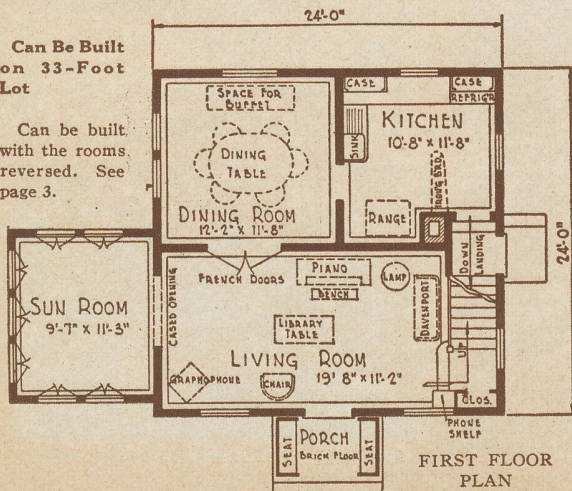
**THE PURITAN** is the most modern type of Dutch Colonial architecture. Painted pure white with contrasting green shutters, and the red or green roof with Colonial red brick chimney, it is an architectural masterpiece. Where will you find a more inviting entrance than this quaint Colonial doorway with Colonial hood, which can be ornamented by the Colonial benches on either side of the doorway? The Puritan has a larger living room, a more spacious dining room and a more roomy kitchen than is found in houses at nearly twice its price. The Puritan, with a foundation of only 24 feet by 24 feet, has just as much real living room space as many houses with dimensions of 34 feet by 34 feet.

## FIRST FLOOR

**The Living Room.** This large living room with four full size windows providing light and ventilation, measures over 19 feet 8 inches by 11 feet 2 inches. To the right, an open stairway to the second floor carries out the true Colonial charm. A clothes closet is on the stair landing within a few steps of the front door. Opposite the front entrance a large wall space affords room for a grand or upright piano. Phone shelf provided near stair landing.

Can Be Built on 33-Foot Lot

Can be built with the rooms reversed. See page 3.



**Honor Bilt**

## The Puritan

*"Already Cut" and Fitted*  
3190A with Sun Room, \$2,395.00. 3190B without Sun Room, \$2,098.00

**The Sun Room.** Size, 9 feet 7 inches by 11 feet 3 inches. A French door opens into the sun room from the living room if 3190A is ordered. Seven pairs of French windows flood this room with sunshine. Tastily furnished and draped, it can be made the chosen spot in winter or summer.

**Dining Room.** Size, 12 feet 2 inches by 11 feet 8 inches. French doors lead from living room to dining room. A wide casement window is on the rear wall just over the space for the buffet. Two regular size windows give plenty of light from the sides. A swinging door opens into kitchen.

**The Kitchen.** Size, 10 feet 8 inches by 11 feet 8 inches. The range and sink are handy as we enter. A kitchen case makes the work of food preparation easy. A long work table with five drawers is directly underneath the window. Ample space for a refrigerator. There is a built-in ironing board. The grade entrance helps to keep the kitchen clean and warm. It also makes it easy to reach the basement from the yard or kitchen.

## SECOND FLOOR

**The Bedrooms.** A spacious hall connects all rooms. Facing the stairway is the bathroom. Each of the three bedrooms has two or three windows, and a clothes closet. A linen closet is in the hall.

**Basement.** Room for furnace, laundry and storage.

**Height of Ceilings.** Basement, 7 feet from floor to joists, with concrete floor. First floor, 9 feet from floor to ceiling. Second floor, 8 feet 2 inches from floor to ceiling.

## OPTIONS

Sheet Plaster and Finish to take the place of wood lath for 3190A, \$175.00 extra; for 3190B, \$161.00 extra. See page 90.

Oriental Asphalt Shingles, guaranteed 17 years, for roof instead of wood shingles, \$30.00 extra.

Maple Flooring for kitchen and bathroom, instead of yellow pine, no extra charge.

Seats for Porch, \$27.00 per pair extra.

Storm Doors and Windows for 3190A, \$105.00 extra; for 3190B, \$74.00 extra.

Screen Doors and Windows, galvanized wire, for 3190A, \$65.00 extra; for 3190B, \$46.00 extra.

Side Pergola, \$76.00 extra.

Rear Pergola, \$129.00 extra.

Oak Doors, Trim and Floors, in living room, dining room, sun room and stairs, instead of yellow pine for 3190A, \$138.00 extra.

Oak Doors, Trim and Floors in living room, dining room and stairs instead of yellow pine for 3190B, \$117.00 extra.

## What Our Price Includes

At the price quoted we will furnish all the material to build this six-room house consisting of:

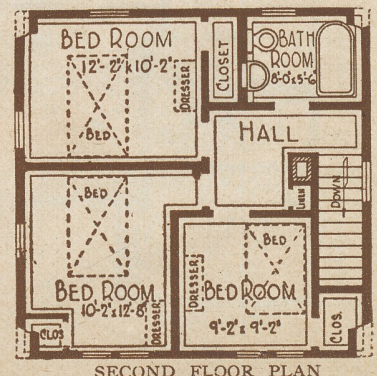
Lumber; Lath;  
Shingles, Best Grade Thick Cedar;  
Siding, Clear Cypress, the "Wood Eternal";  
Framing Lumber, No. 1 Quality Yellow Pine;  
Flooring, Clear Grade Yellow Pine;  
Porch Ceiling, Clear Grade Yellow Pine;  
Finishing Lumber;  
High Grade Mill Work (see pages 86 and 87);  
Interior Doors, Two Vertical Panel Design of White Pine with Fir Panels;  
Trim, Beautiful Grain Yellow Pine;  
Kitchen Cupboards; Medicine Case;  
Built-In Ironing Board;  
Windows of California Clear White Pine;  
40-Lb. Building Paper; Sash Weights;  
Eaves Trough and Down Spout;  
Stratford Design Hardware (see page 107);  
Paint for three coats outside;  
Varnish and Filler for Interior Trim and Doors;  
Complete Plans and Specifications.

Built on a concrete and brick foundation and excavated under entire house.

We guarantee enough material to build this house. Price does not include cement, brick or plaster.

See Description of "Honor Bilt" Houses on Pages 12 and 13.

For Prices of Plumbing, Heating, Wiring, Electric Fixtures and Shades see page 106.





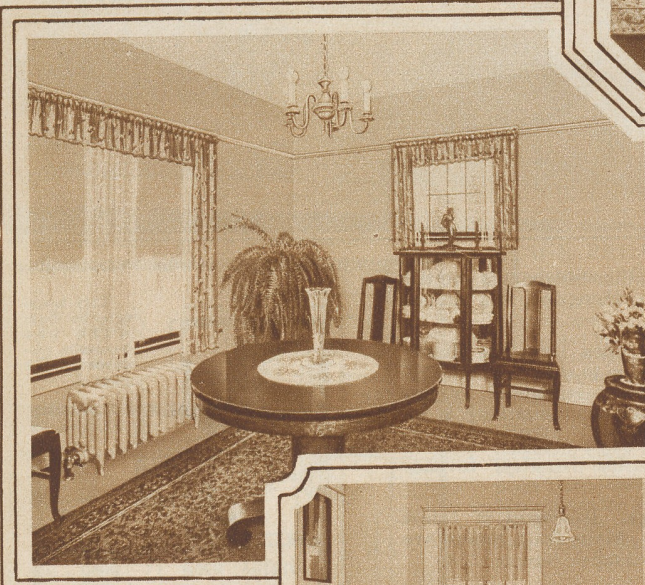
# THE PURITAN INTERIORS



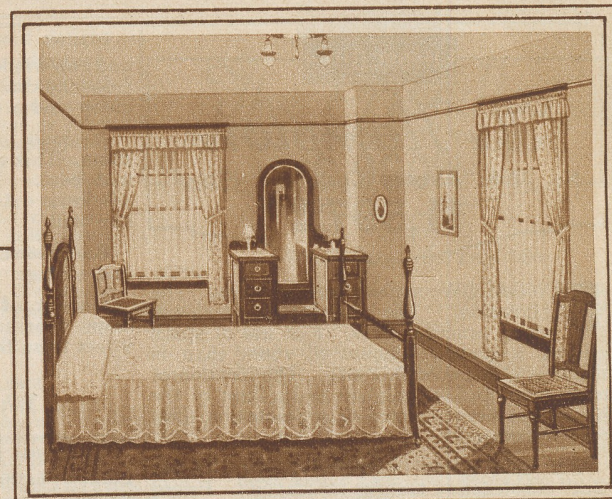
THE KITCHEN



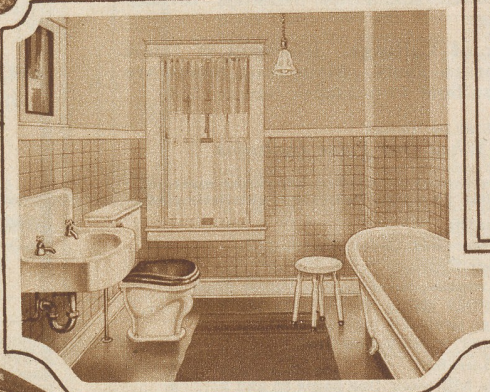
THE LIVING ROOM



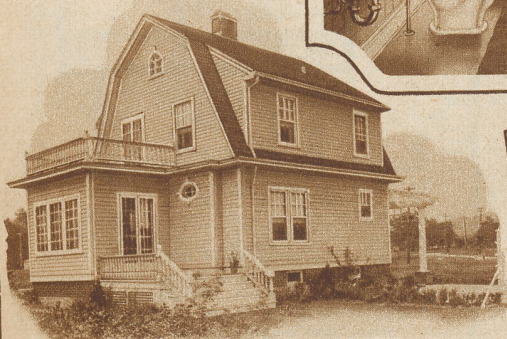
THE DINING ROOM



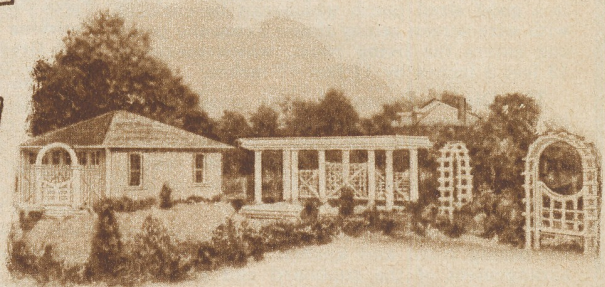
THE BEDROOM



THE BATHROOM



All of the furnishings shown above were taken from our Big General Catalog, "The Thrift Book of a Nation."



August 11, 1924.

Gentlemen:-

I have just recently completed building one of your "Honor Bilt" Modern Homes, and want to tell you how well I am satisfied. I saved over \$2,000.00 in building this house, and when it was completed I was able to get a mortgage for more than the construction cost. It certainly is a substantial house, and no one will make a mistake in buying or building an "Honor Bilt" Modern Home.

You might also like to know that it is furnished with Sears-Roebuck rugs, furniture and curtains, also wall paper and fixtures, and in buying my furniture from you I saved over half. You may refer anyone to me as I know they will be pleased as well as satisfied in dealing with your company.

(Signed) A. W. Fischer, Eastwood, Ohio