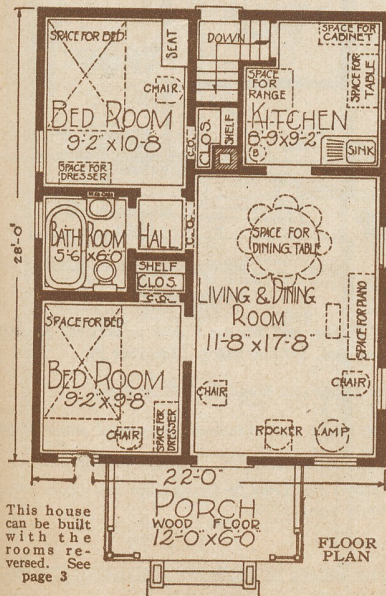


FOUR ROOMS, BATH AND PORCH



IT IS hardly necessary to say that The Rodessa is a most attractive little home. The illustration proves it beyond a doubt. Furthermore, the price is also attractive. Much thought and expert advice have been employed in designing an exterior that will make this bungalow appeal to lovers of artistic homes. The interior plan appeals to all people desiring the utmost economy in space. The Rodessa has proved to be one of our most popular houses, and owners are delighted with it. If you have only a moderate amount to invest, and wish to secure the biggest value for your money, with the greatest results in comfort, convenience and attractiveness, you can make no mistake in purchasing this house.

Can be built on a lot 27 feet wide



No. 7041 With Bathroom

Honor Bill

The Rodessa
No. 7041 "Already Cut" and Fitted
\$1,138⁰⁰
No. 3203 Without Bathroom
"Already Cut" and Fitted
\$1,114⁰⁰

The Living and Dining Room. A trellised front porch, 12 feet by 6 feet, leads to the combination living and dining room. The room accommodates a piano, davenport, radio cabinet, upholstered chairs, lamps and a dining set. Size of room, 11 feet 8 inches by 17 feet 8 inches. Sunshine and air are assured by windows at the side and front.

The Kitchen. A door connects the living and dining room with the kitchen. Size of kitchen, 8 feet 9 inches by 9 feet 2 inches. There is space for a sink, table, range and cabinet. A double window provides light and ventilation.

Steps in the rear entry lead to the basement.

The Bedrooms. From the living and dining room a door opens into the front bedroom. Size of bedroom, 9 feet 2 inches by 9 feet 8 inches. It has a clothes closet with a cased opening, and a front window.

The rear bedroom is entered from a hallway off the living and dining room. It has a clothes closet with a cased opening, and a side window.

The Bathroom, too, opens off the hallway. It has a medicine case, and is lighted by a window.

The Basement. Room for furnace, laundry and storage. Height of Ceilings. Main floor, 9 feet from floor to ceiling. Basement, 7 feet from floor to ceiling.

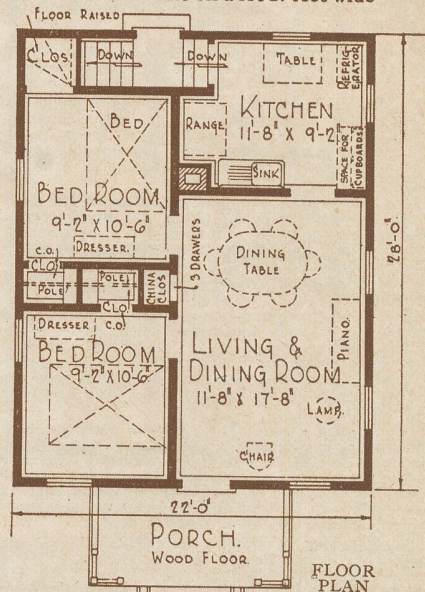
What Our Price Includes

At the price quoted we will furnish all the material to build this four-room house, consisting of:

Lumber; Lath;
Roofing, Clear Red Cedar Shingles;
Siding, Clear Cypress;
Framing Lumber, No. 1 Quality Yellow Pine;
Flooring, Clear Yellow Pine;
Porch Flooring, Clear Edge Grain Fir;
Porch Ceiling, Clear Yellow Pine;
Finishing Lumber;
High Grade Millwork (See Pages 86 and 87);
Interior Doors, 5-Cross Panel Design, White Pine With Fir Panels;
Trim, Beautiful Grain Yellow Pine;
Windows of California Clear White Pine;
Medicine Case;
Eaves Trough and Down Spout;
40-Lb. Building Paper; Sash Weights;
Stratford Design Hardware (See Page 107);
Paint for Three Coats Outside Trim and Siding;
Varnish and Wood Filler for Interior Doors and Trim;
Complete Plans and Specifications.
See Description of "Honor Bill" Houses on Pages 12 and 13.

The Rodessa Is Shown in Colors on Page 21

Can be built on a lot 27 feet wide



No. 3203 Without Bathroom

Designed for districts where no sewerage or cesspool facilities are available. Very much the same as No. 7041 but without bathroom

OPTIONS

Sheet Plaster and Plaster Finish to take the place of wood lath, \$95.00 extra for No. 7041 and \$90.00 for No. 3203. See page 90.

Oriental Asphalt Shingles, guaranteed 17 years, instead of wood shingles, \$14.00 extra.

Clear Maple Flooring furnished for kitchen and bathroom instead of yellow pine, no extra charge.

Storm Doors and Windows, \$34.00 extra for No. 7041 and \$39.00 for No. 3203.

Screen Doors and Windows, galvanized wire, \$24.00 extra for either design.

For prices of Plumbing, Heating, Wiring, Electric Fixtures and Shades, see page 106.